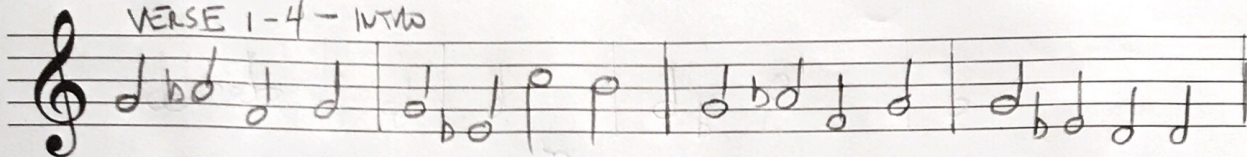


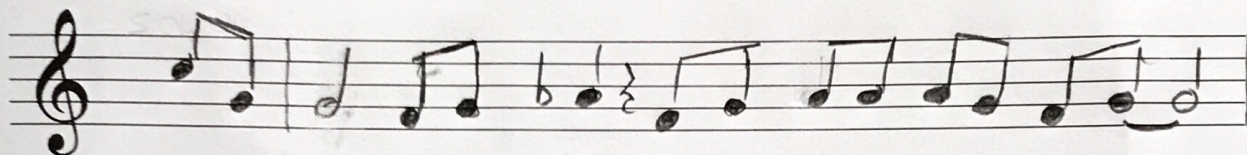
HORNS - TRUMPET 1 Bb

PATRICK FITZGERALD

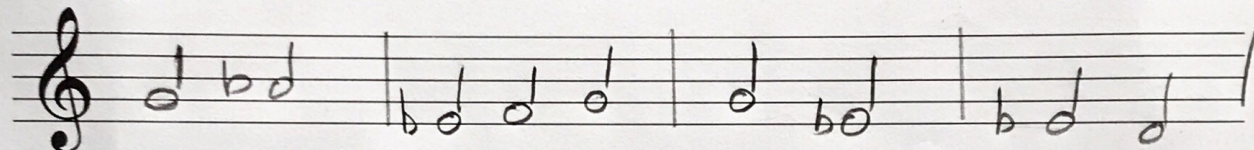
VERSE 1-4 - INTRO



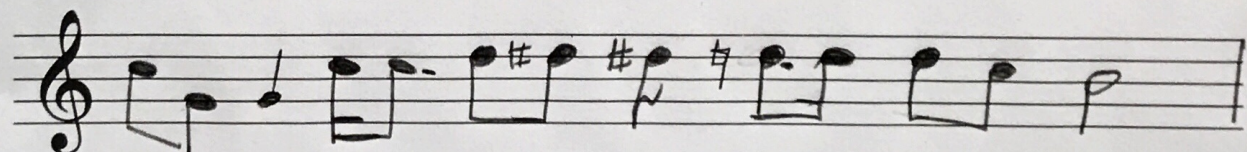
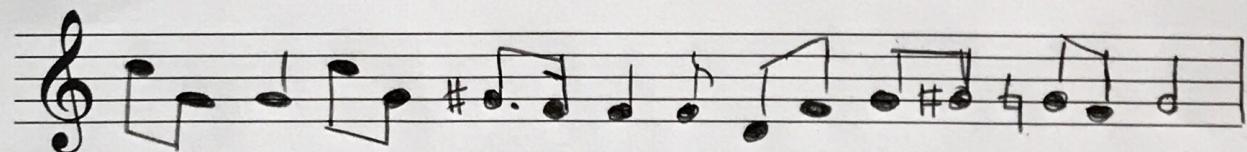
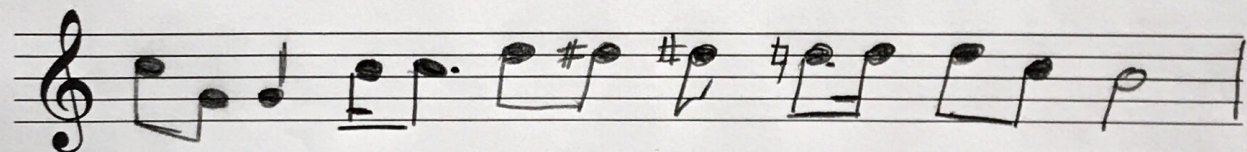
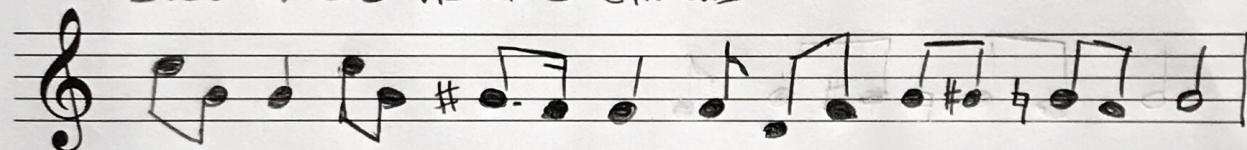
VERSE 1 THEN SOLO



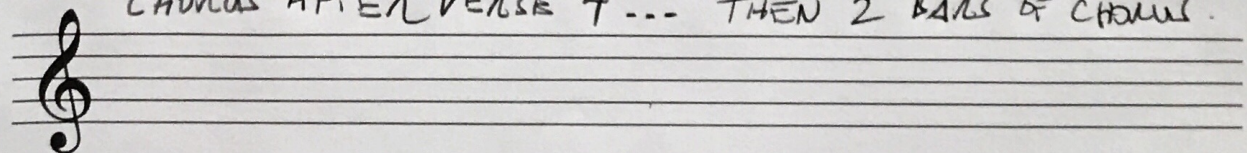
CHORUS



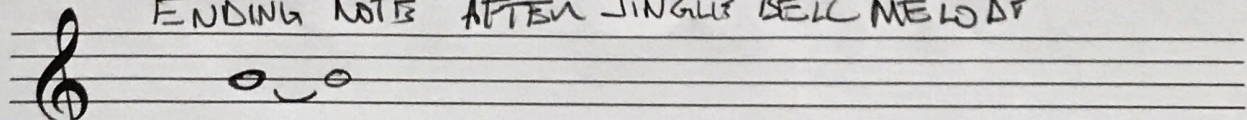
SOLO AFTER VERSE 3 CHORUS



CHORUS AFTER VERSE 4 ... THEN 2 BARS OF CHORUS.



ENDING NOTE AFTER JINGLES BELL MELODY



1:42 B♭ TRUMPET

PATRICK FITZGERALD

MP - MED

3X

"ST. CHARLES AND WALNUT"

GUITAR BREAK

(REPEAT 3X)

SOLO - forte

3X

INTRO TO BRIDGE

"CHRISTMAS MORNING THE SAVIOUR..."

REPEAT 3X

GUITAR

CHRISTMAS MORNING, 1:42 / "I RIDE THE TRAIN."

"ANTEBELLUM MANSIONS..."

"I'LL BE HOME FOR CHRISTMAS"

"I'M SIPPING ON THE TRAIN"

"BROUGHT SOME EVAN..."

... AT 1:42" (GUITAR)